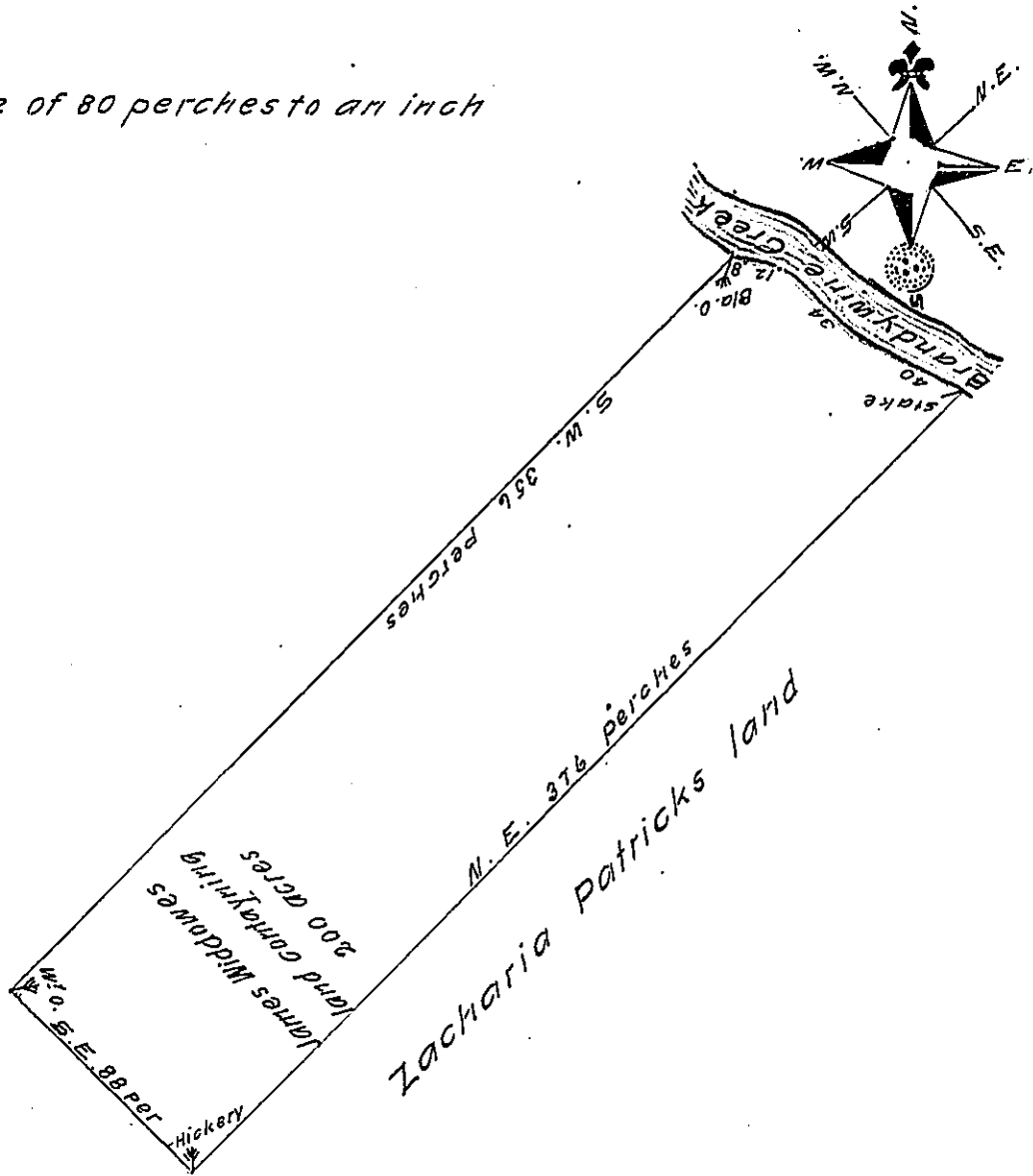


By a scale of 80 perches to an inch



By virtue of a warrant from Thomas Holme, Survey<sup>r</sup> Gen<sup>l</sup> dated the 14<sup>th</sup> of the 2<sup>d</sup> month 1685.

This may certifie that there is laydd out for James Widdowes a certain tract of land scittuate & being on ye south side of Brandywine Creek beginning at a corner marked stake standing by Brandywine Creek side being a corner of Zacharia Patricks land thence up by the sd creek side N. 63<sup>d</sup> Wly 40 perches N. 47<sup>d</sup> Wly 34 perches N. 77<sup>d</sup> Wly 12 perches N. 53 Wly 8 perches to a corner marked black oak standing by Brandywine Creek side thence by a line of marked trees S. W. 356 perches to a corner marked white oak thence by a line of marked trees S. E. 88 perches to a corner marked hickery tree being a corner tree of Zacharia Patricks land thence by a line of the sd Patricks land N. E. 376 perches to the first mentioned stake containing two hundred acres of land surveyed the 18<sup>th</sup> of the 12<sup>th</sup> month 1685. *J.P.* Tho. Pierson

IN TESTIMONY that the above is a copy of the original remaining on file in the Department of Internal Affairs of Pennsylvania, made conformably to an Act of Assembly approved the 16th day of February, 1833, I have hereunto set my Hand and caused the Seal of said Department to be affixed at Harrisburg, this fourteenth day of July 1909

*Henry Horvath*  
Secretary of Internal Affairs.